

Conference Pack



Introduction

Nestled within the Derbyshire Peaks, The Izaak Walton Hotel (Dovedale) Ltd is a charming 17th Century building offering comfort, history and views of outstanding natural beauty. The hotel is named after the famous author of 'The Complete Angler'. The hotel is privately owned, situated in an idyllic setting with modern facilities offering a unique combination of warm hospitality, tranquillity and a traditional outlook whilst maintaining high standards of service.

Our 5 meeting rooms can accommodate between 6 and 30 delegates in a boardroom style layout, with our largest room able to seat up to 130 delegates for a conference, or guests for a banquet.

Our hotel also lends itself ideally to training sessions with a motivational aspect. The surrounding hills, valley and the River Dove are the perfect setting for team building exercises. Activities can be arranged at nearby venues (prices to be confirmed).

As a small independent family run hotel, we offer a flexible approach in meeting our client's requirements. The sample menus shown in this booklet are merely an indication of what we have to offer and our chef's pride themselves on their ability to cater to all tastes. Our menus are also complemented by a carefully selected wine list.

Accommodation

We have thirty-six well-appointed bedrooms, most of which have wonderful views over the gardens and the Derbyshire / Staffordshire Peaks. All rooms have an en-suite bathroom and shower and also a hospitality tray, luxury 'Liberty & Green' amenity products, trouser press and complimentary water. Our superior rooms are larger and most have spa baths.



Three of our rooms have four poster beds. We also have two rooms located in the original 17th Century building which still retain their original oak beams and window seats.

Rooms can be booked as part of the '24 Hour Delegate Package'. Alternatively if any organiser or delegate simply wants to extend their stay at the hotel after their meeting or conference has concluded, please contact us to discuss our latest rates and offers.

The Haddon Restaurant

With creative interpretations on traditional dishes, fine dining in the Haddon Restaurant is the place to dine in style, whilst enjoying breath taking views of Thorpe Cloud and the Dovedale Valley.

Our menu offers a magnificent selection of choices incorporating local produce. All of our dishes are homemade and freshly cooked to order.

Our food is accompanied by an excellent selection of fine wines and clarets from a variety of respected vineyards worldwide.

The Dovedale Bar

With its traditional 17th Century low windows, beams and stonework, the Dovedale Bar and its warm and cosy atmosphere is the perfect place to enjoy a pre-dinner drink or just to pop in and relax. When the weather permits you can also relax in our large gardens with seating areas offering glorious views of the Dovedale valley.

Open all day, to residents and non-residents, we offer a wide range of beverages including locally produced ale, together with a great selection of wines & spirits.

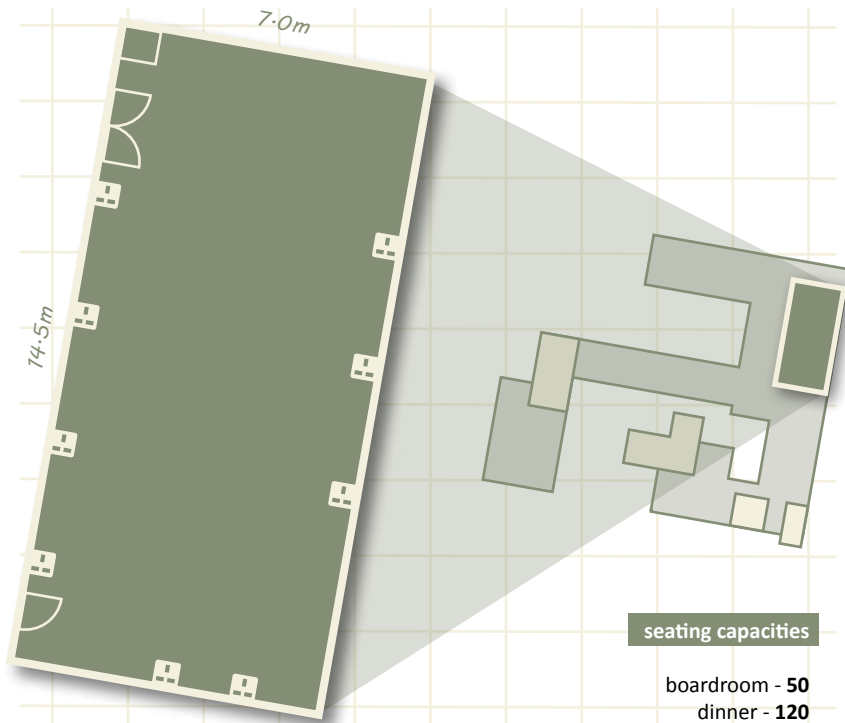
Freshly prepared Bar food and light snacks are available throughout the day from 8am. Cooked breakfast, lunch, afternoon cream tea or an evening bar meal, we have something for everyone whatever time of day you call by.

Meeting Rooms



The Haddon Room

Offering the advantages of natural daylight and a ground floor position, The Haddon Suite can also be divided into two sections meaning a U-shaped setup can be provided subject to numbers.

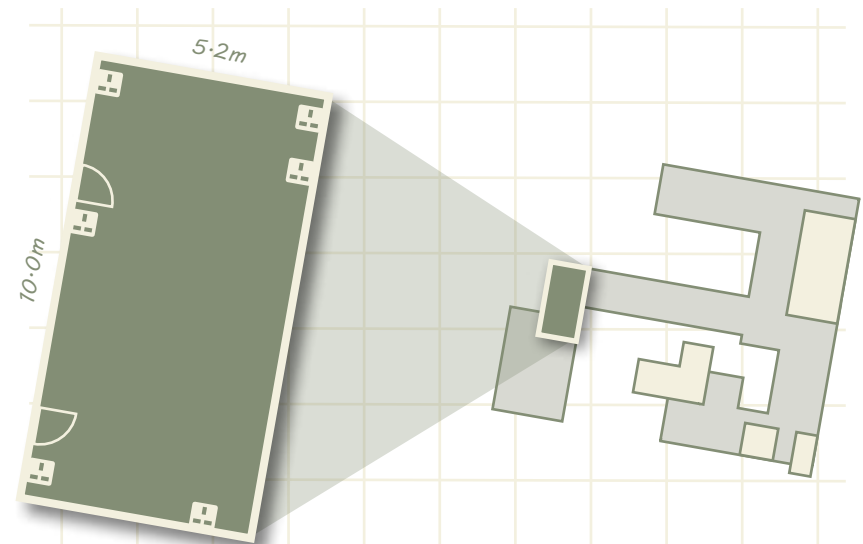


seating capacities

boardroom - 50
dinner - 120
theatre - 50
classroom - 40

The Rutland Room

Again, offering the advantages of natural daylight and a ground floor position, The Rutland Room is located away from the main dining room and bar area.



seating capacities

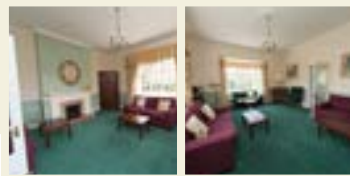
boardroom - 20
dinner - 24
theatre - 40

for more information or to make a booking...

call us today on **01335 350 981**
or email reception@izaakwaltonhotel.com



Lounges

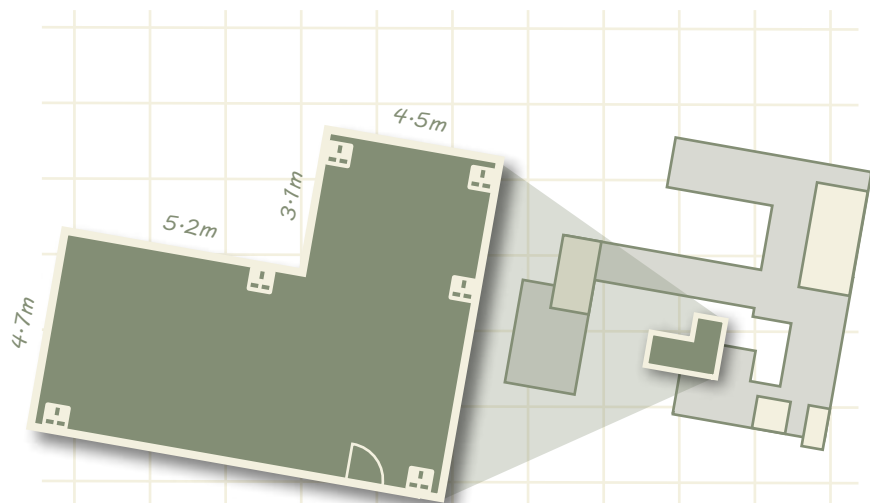


The Dovedale Lounge

Ideal for an informal setup or syndicate room, the Dovedale Lounge can also be used for private dining. Please note that as the Dovedale Lounge is to the rear of the Dovedale Bar it is not completely soundproof. Please speak to a member of staff if you require any further information.

The Granby Lounge & The Manners Lounge

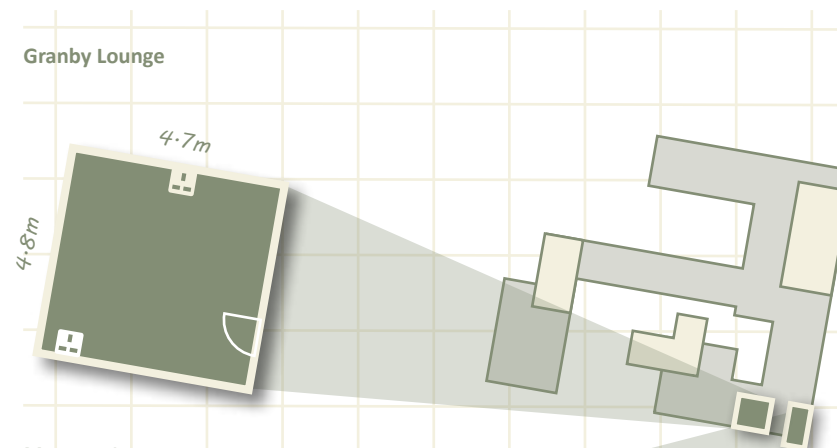
Located close to the Haddon Room, Dovedale Lounge and Dovedale Bar and offering the advantages of natural daylight and a ground floor position, both the Granby Lounge and Manners Lounge are ideal as an informal setup or syndicate room.



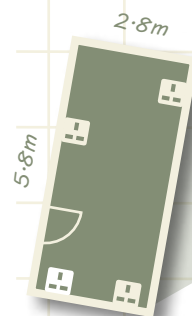
seating capacities

boardroom - 20
dinner - 20/24
theatre - 30

Granby Lounge



Manners Lounge



seating capacities

Granby
boardroom - 8
dinner - 6

Manners
boardroom - 8
dinner - 8

for more information or to make a booking...

call us today on **01335 350 981**
or email reception@izaakwaltonhotel.com

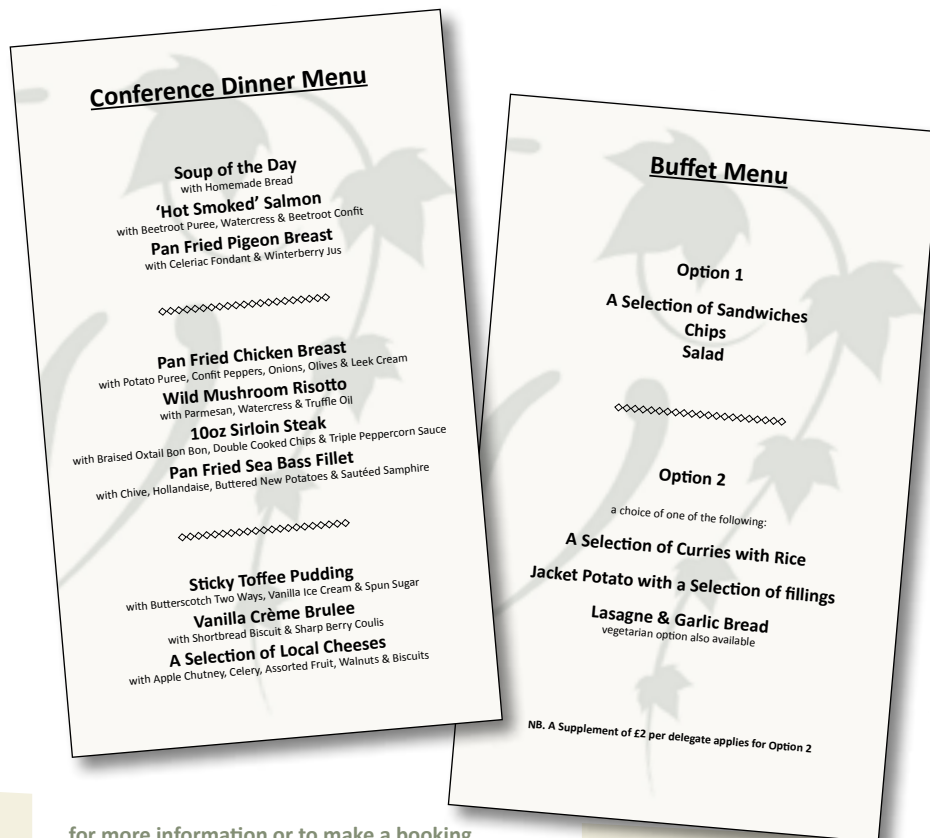


Additional Information



Sample Menus

The sample menus shown here are merely an indication of what we have to offer and whatever your needs, our chef's pride themselves on their ability to cater to all tastes and dietary requirements. Our menus are also complimented by a carefully selected wine list.



for more information or to make a booking...

call us today on **01335 350 981**
or email reception@izaakwaltonhotel.com



Delegate Rates

All rates shown below are per delegate and correct as of February 2015. To confirm current rates or to discuss your bespoke requirements, please contact reception.

Day Rate

- Function Room Hire
- Morning Tea/Coffee with Homemade Biscuits
- Option 1 Buffet
- Afternoon Tea/Coffee and Homemade Cakes
- Purified Bottled Water & Cordial
- All Stationery Items
- Free Car Parking
- Free Wi-Fi

from **£40.00**
inc VAT

24 Hour Delegate Package

- Function Room Hire
- Morning Tea/Coffee with Homemade Biscuits
- Hot or Cold Buffet Lunch
- Afternoon Tea/Coffee and Homemade Cakes
- Purified Bottled Water & Cordial
- Standard Screen & Flipchart
- All Stationery Items
- Three Course Evening Meal
- Overnight Accommodation
- Full Traditional Breakfast
- Free Car Parking
- Free Wi-Fi

from **£150.00**
inc VAT

Extras

Room Hire
Syndicate Rooms
Photocopying
Faxing
Additional Guests for Dinner

£75.00 for half day / £125.00 for full day
from £50.00 per day
from 20p per sheet
from £1.00 per sheet
£35.00 per guest



Terms & Conditions



Conferences, Banquets and Functions booked at the Izaak Walton Hotel (Dovedale) Ltd by the Client shall be subject to the following:

1. Numbers Attending

- The Client shall give details of final numbers attending the function when requested by the Izaak Walton Hotel (Dovedale) Ltd and in any case, not less than 3 days beforehand. The acceptance of any increase over the previously advised numbers will be at the discretion of the Izaak Walton Hotel (Dovedale) Ltd. Where the booking includes bedroom accommodation, full details of the number of people staying, together with the type of accommodation and length of stay must be stated in writing, no less than 14 days prior to the date of arrival, or sooner if requested. The names of those occupying each room must be given in writing at least 3 days prior to the date of arrival.
- The Izaak Walton Hotel (Dovedale) Ltd reserves the right to charge in full for any decrease from the final numbers given, but in any case the minimum chargeable numbers will apply.

2. Information

- The Client shall provide on request by the Izaak Walton Hotel (Dovedale) Ltd, all such information which is available in relation to the function as may be necessary to enable the Izaak Walton Hotel (Dovedale) Ltd to make a fully informed assessment of its obligations to provide the services.

3. Charges

- The Client agrees to pay all charges on the due dates failing which interest will be charged daily at 2% over the Izaak Walton Hotel (Dovedale) Ltd Bankers Base Rate.
- Any function for which advance payment is overdue by more than 7 days may be cancelled by the Izaak Walton Hotel (Dovedale) Ltd and the cancellation fees detailed in Clause 9 will become payable immediately.
- If there are any queries on any part of an invoice, the Client will pay the undisputed balance of the sum owing on the date due and the remainder on the resolution of the query.
- The Izaak Walton Hotel (Dovedale) Ltd reserves the right to withhold or withdraw credit facilities at any time without notice.

4. Advertising

- If the general public are to be admitted to the Function, the Client should not use names or trademarks of the Izaak Walton Hotel (Dovedale) Ltd without prior written permission and must show all tickets, posters and advertising material to the Izaak Walton Hotel (Dovedale) Ltd for approval in writing. In all other circumstances this information should be provided by the Izaak Walton Hotel (Dovedale) Ltd.

5. Liability

- The Izaak Walton Hotel (Dovedale) Ltd will be liable to the Client and/or persons attending the function for injuries to persons or loss or damage to property only where and to the extent that it has been negligent but otherwise will be under no liability to them whatsoever.
- The Client will be liable for any loss or damage to the property of the Izaak Walton Hotel (Dovedale) Ltd including walls, light fittings and equipment (including items hired for their use) or injury to any person including the staff of the Izaak Walton Hotel (Dovedale) Ltd and indemnify the Izaak Walton Hotel (Dovedale) Ltd against any loss or liability arising from the function.
- The Client is advised to consider arranging insurance for the function covering public liability and loss or damage to their property and that of persons attending the function.

6. General

- The Izaak Walton Hotel (Dovedale) Ltd will take all reasonable steps to fulfil the reservation to the best of its ability and in accordance with the details provided. However it reserves the right to provide alternative services of at least an equivalent standard at no additional cost to the Client.

- The Client shall not be entitled to assign the booking to a third party and/or not utilise the Izaak Walton Hotel (Dovedale) Ltds facilities other than for the purpose stated without the prior written approval of the Izaak Walton Hotel (Dovedale) Ltd.
- The Izaak Walton Hotel (Dovedale) Ltd reserves the right to pass on to the Client any additional costs incurred.
- Whilst the Izaak Walton Hotel (Dovedale) Ltd has taken all reasonable steps to ensure that the information contained in its brochures, tariffs, leaflets and advertisements is accurate it reserves the right to alter, substitute or withdraw any service, facility or amenity without notice if necessary.
- Notwithstanding any item contained in these terms & conditions, the Izaak Walton Hotel (Dovedale) Ltd will not be liable for any failure to perform its obligations to the Client in whole or in part as a result of the following circumstances: strikes, other industrial action(s), fire at or near the Izaak Walton Hotel (Dovedale) Ltd, flood at or near the Izaak Walton Hotel (Dovedale) Ltd, civil unrest, dispute or commotion, act of god, legal action against the Izaak Walton Hotel (Dovedale) Ltd, not resulting from its negligence, preventing the supply of the services.
- No variation of these terms & conditions shall be effective unless in writing and signed on behalf of both the Izaak Walton Hotel (Dovedale) Ltd and the Client.
- The Agreement shall be subject to the law of the Court.

7. Clients Use of the Izaak Walton Hotel (Dovedale) Ltd

- The Client will:
 - Comply with all the Health & Safety, licensing and other regulations relating to the Izaak Walton Hotel (Dovedale) Ltd.
 - Comply with the non-smoking policy within the bedrooms and inside of the Izaak Walton Hotel (Dovedale) Ltd.
 - Not carry out any electrical or other works at the Izaak Walton Hotel (Dovedale) Ltd, including amplification and lighting without the prior written consent of the Izaak Walton Hotel (Dovedale) Ltd.
 - Not bring any dangerous or hazardous items into the Izaak Walton Hotel (Dovedale) Ltd and will remove any such items promptly when requested to do so by a member of the Izaak Walton Hotel (Dovedale) Ltd management or any other authorised person.
 - Not consume any food or drink at the Izaak Walton Hotel (Dovedale) Ltd not supplied by the Izaak Walton Hotel (Dovedale) Ltd or its authorised caterers without the Izaak Walton Hotel (Dovedale) Ltds prior written consent.
 - Not act in an improper or disorderly manner, leave promptly at the appropriate time and comply with any reasonable requests by the Izaak Walton Hotel (Dovedale) Ltds employees.
- Any person in breach of these terms & conditions may be refused admission to or be removed from the Izaak Walton Hotel (Dovedale) Ltd.

8. Cancellation by the Izaak Walton Hotel (Dovedale) Ltd

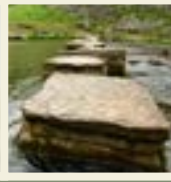
- The Izaak Walton Hotel (Dovedale) Ltd may cancel the booking under the following circumstances:
 - If the Izaak Walton Hotel (Dovedale) Ltd or any part is closed due to circumstances outside of its control.
 - If the Client becomes insolvent or enters into liquidation or receivership.
 - If the Client is more than 30 days in arrears with any payment to the Izaak Walton Hotel (Dovedale) Ltd.
 - If it might prejudice the reputation of or cause any damage to the Izaak Walton Hotel (Dovedale) Ltd.
- In such an event the Izaak Walton Hotel (Dovedale) Ltd will refund any advance payment made but will have no further liability to the Client.

9. Cancellation by the Client

- Full payment is due 2 weeks before the event (unless agreed otherwise).
- Any extras on the day will be paid for on departure.
- If the Client cancels a reservation less than 12 months in advance the Izaak Walton Hotel (Dovedale) Ltd reserves the right to claim the following sums unless the booking is obtained for the same dates from a third party on no less favourable terms:
 - Cancellation between 6-12 months in advance: 25% of room hire fee.
 - Cancellation between 1-6 months in advance: 50% of the final invoice.
 - Cancellation less than 30 days in advance: 100% of the final invoice.

- In all instances notification of the cancellation must be made in writing and will be effective on the date written confirmation is received by the Izaak Walton Hotel (Dovedale) Ltd





The Izaak Walton Hotel is a historic country house hotel which offers comfort and views of outstanding beauty across the Derbyshire and Staffordshire Peaks, named after the author of 'The Complete Angler'.

The idyllic setting and modern facilities make the Izaak Walton Hotel a unique and ideal choice for your leisure or corporate stay:

- 36 well-appointed bedrooms, most of which have wonderful views over the gardens and Derbyshire/Staffordshire Peaks
- Fishing rights and access to one of Derbyshire's finest trout streams (daily charges apply - please ask for details)
- Fine dining in the Haddon Restaurant
- Drinks, freshly prepared bar food and light snacks are available throughout the day from 11am until 9pm in the Dovedale Bar, which is open to both residents and non-residents
- We are able to cater for weddings, conferences, group bookings, parties, family gatherings and luncheons.



How to Find Us...

FROM M1 (NORTH)

1. Exit junction 28, pick up A38 and follow signs to Alton Towers and 1. At the first roundabout go straight across - at the second roundabout follow signs to Ashbourne (A52). Approach first roundabout on the outskirts of Ashbourne and follow the brown tourist signs to Dovedale which takes you through Ashbourne and on to Dovedale.

2. Exit junction 25 and follow signs to Derby and Ashbourne on the A52. Approach first roundabout on the outskirts of Ashbourne and follow the brown tourist signs to Dovedale which takes you through Ashbourne and on to Dovedale.

FROM M1 (SOUTH)

1. Exit junction 24 and follow signs to Uttoxeter and Stoke-on-Trent (A6 going on to A50). At Sudbury follow Ashbourne signs (A515). On the outskirts of Ashbourne you approach a roundabout and follow the brown tourist signs to Dovedale which takes you through Ashbourne and on to Dovedale.

FROM M6

1. Exit junction 15 and go across the first small roundabout. Take the second turn on the left. Turn right over the A500 and pick up the A50 to Uttoxeter and continue on the A50 to Sudbury. At Sudbury follow signs to Ashbourne (A515). On the outskirts of Ashbourne you approach a roundabout and follow the brown tourist signs to Dovedale which takes you through Ashbourne and on to Dovedale.



The Izaak Walton Hotel (Dovedale) Ltd

Ilam, nr Ashbourne, Derbyshire, DE6 2AY
telephone: 01335 350 981 fax: 01335 220 055
email: reception@izaakwaltonhotel.com
www.izaakwaltonhotel.com

